

G2200QL Cabinet Lock With Indicator

Features

- Only 45° rotation is needed to unlock/lock the door. Key automatically returns to original position
- With indicator: Unlocked - Blue, Locked – Red
- For drawer application
- Types for right-handed door also available (made-to-order)
- 300 key changes available
- Master key system available on request (max. 170 key changes per master key)
- Keys can be shared with **G2200 Lock Series**

Notes

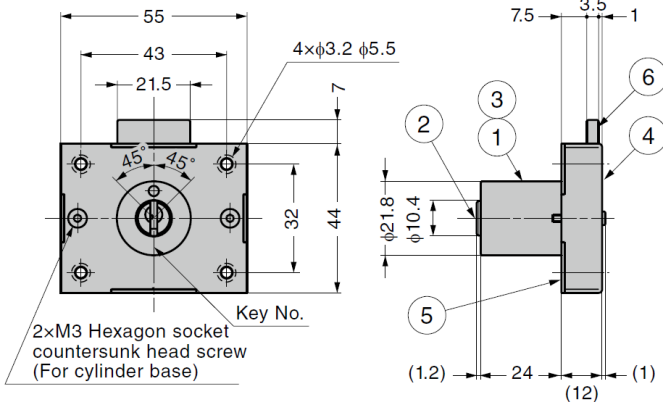
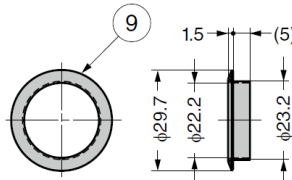
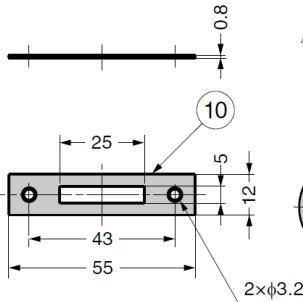
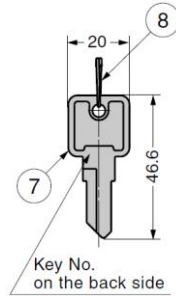
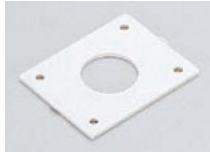
- For locking or unlocking, rotate the key until the indicator completely turns red or blue

Parts Included

- Countersunk head wood screw 3.1×20, 2.1×10 (SUS)

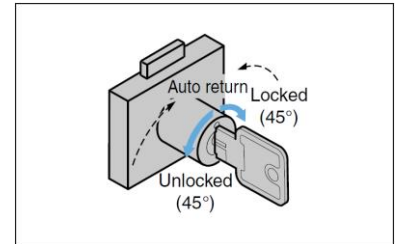
Sold Separately

- Spacer **G6810-SP**



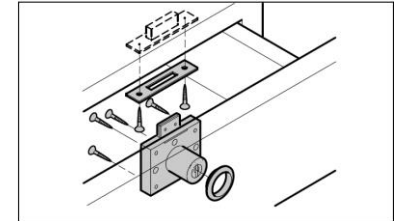
No.	Part Name	Material	Finish
①	Cylinder (Outer)	Zinc Alloy (ZDC)	Coloured Zinc Chromate (Trivalent)
②	Cylinder (Inner)		Satin Nickel
③	Body Pipe	Brass	
④	Body	Stainless Steel (SUS304)	Plain
⑤	Cylinder Base		
⑥	Dead Bolt	Zinc Alloy (ZDC)	Nickel
⑦	Key	Brass	
⑧	Key Ring	Stainless Steel (SUS304)	Plain
⑨	Surface Ring	Brass	Satin Nickel
⑩	Strike	Stainless Steel (SUS304)	Plain

Lock / Unlock

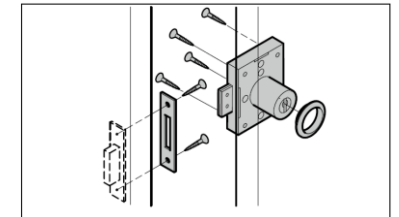


Key automatically returns to original position

Installation



Installing to Right-Handed Doors



※Types for right-handed doors are made to order

Part No.	Key Type	Cylinder Diameter	Door Thickness
G2200QL-24-B	Keyed Differently	21.8	24
G2200QL-24-D	Keyed Alike		